



# The American Board of Pathology

A Member Board of the American Board of Medical Specialties

WEB SITE: [www.abpath.org](http://www.abpath.org)

TELEPHONE: (813) 286-2444

Revised 7/2/09

## **InterContinental Hotel/Airport Complimentary Shuttle**

- Courtesy shuttle telephones are located in the baggage claim area at Tampa International Airport, or you may call the hotel directly at (813) 286-4400. Advise the hotel operator your exit door for pick up ( Blue #1, Blue #2, Red #1, or Red #2).
- Proceed to the pickup area. The Airport Shuttle Van is white with the InterContinental Tampa sign on the door.
- The Airport Shuttle Van leaves the hotel on the hour and half hour. The hours of operation are 5:00 am to 1:00 am.

## **RESTAURANTS**

### *Within Hotel Complex*

Essex (breakfast/lunch) - 289-6975

Shula's Steak House (breakfast/lunch/dinner) - 289-6975

### *Food Court Westshore Mall (across Kennedy Blvd.)*

### *Within Westshore Mall*

Maggiano's (Italian) - 288-9000

Mitchell's Fish Market - 289-3663

P. F. Chang's - 289-8400

The Palm (pricey) - 849-7256

### *Within Walking Distance*

Burger King/4565 W. Kennedy Blvd- 286-3638

Panera Bread/112 N. Westshore Blvd - 286-7119

Starbucks Coffee/112 N. Westshore Blvd - 636-8500

Subway/301 N. Westshore Blvd - 286-1524

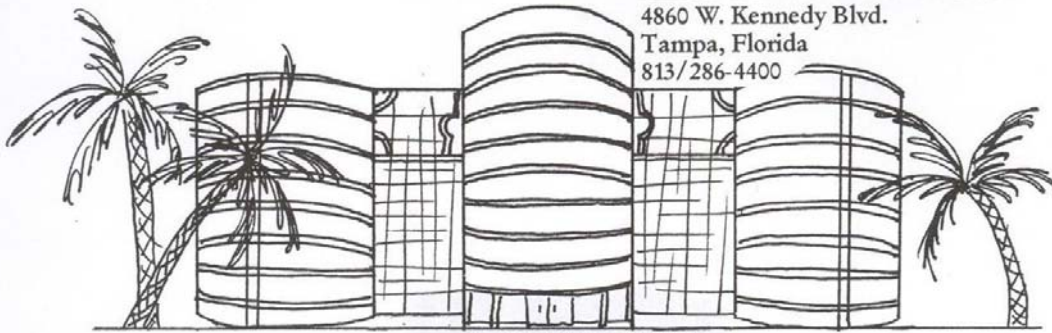
Taco Bell/4647 W. Kennedy Blvd - 636-9100

GoGos Greek Grill/4616 W. Kennedy Blvd - 289-4646

Floridian/4424 W. Kennedy Blvd - 287-6662

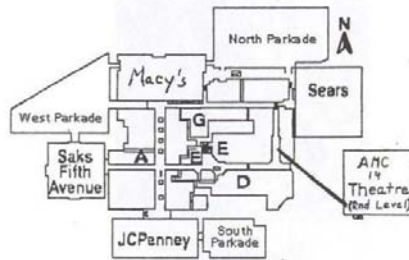
# InterContinental Hotel

4860 W. Kennedy Blvd.  
Tampa, Florida  
813/286-4400

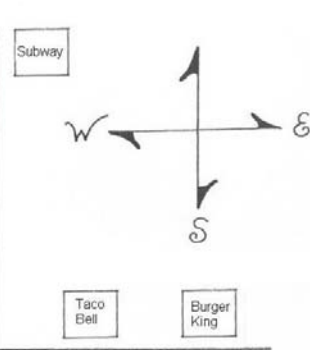


W. KENNEDY BLVD.

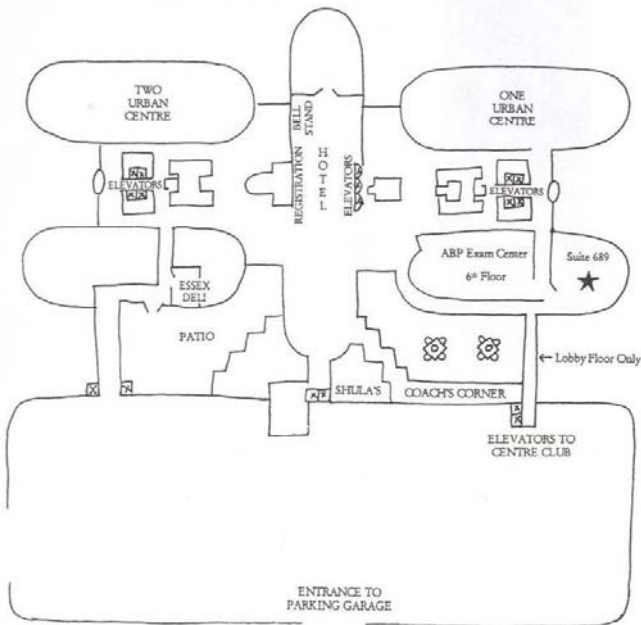
Food Court Restaurants  
Maggiano's Italian Restaurant  
The Palm (fine dining)  
P. F. Chang's



WEST SHORE PLAZA



W. KENNEDY BLVD.



WEST SHORE BLVD.

